



Filter Systems

Service and Maintenance





Filter Systems

Service and Maintenance

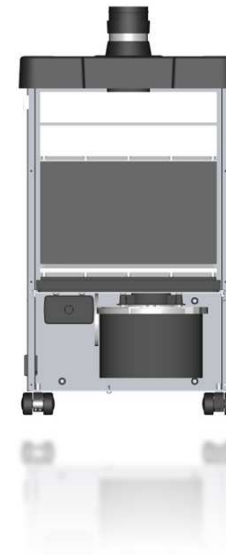
- What is new in Filter System Laser Line
- Maintenance
- Filtronic tools
- New filter system



What is new in Filter System Laser Line



V.S



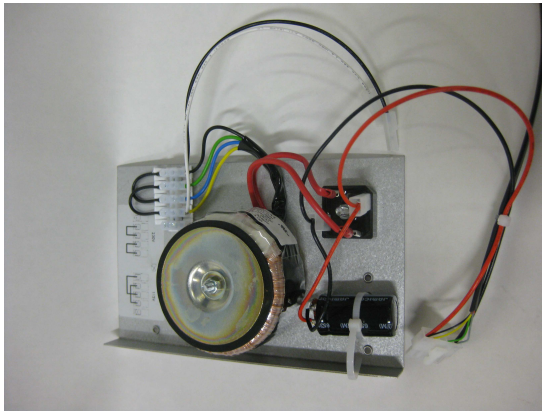


What is new in Filter System Laser Line

- Pre filter bag (With quick connection)
- Main filter (New filter concept)
- Control panel (Same as LL450, LL250)
- Wheels (Easy to move the unit)
- Power switch (High inrush switch "150A")
- Power supply (UL Standard 1310)
- RS 232 Interface ("Potential free contact")
- New locks (Easy to change filter)



What is new in Filter System Laser Line





Filter Systems

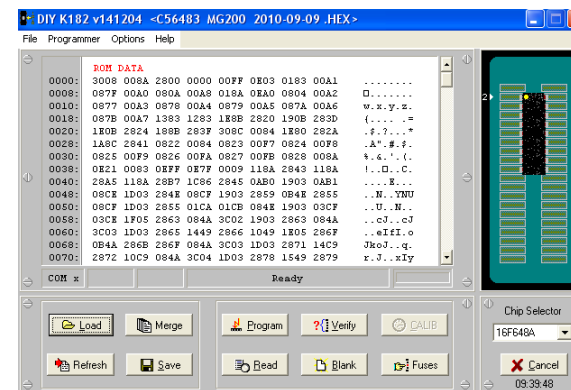
Maintenance





Filter Systems

Maintenance





Filter Systems

Tools to verify the filter system

Status Indicator

The screenshot shows the Status Indicator software interface. At the top is the Filter Systems logo. Below it, various system parameters are displayed in a list:

- SOFTWARE VERSION: 46473
- REMAINING FILTER TIME: 1500 h
- POWER LEVEL: 95%
- ACTUAL FAN SPEED: 0 Hz
- ALARM LEVEL: 129 Hz
- ALARM STATUS: No alarm
- OPERATING TIME: 0 h
- ENVIRONMENT STATUS: A bar with four green segments and two white segments.
- POWER REDUCTION: Off

At the bottom, there are four buttons labeled TG4, TG3, TG2, and TG1. Below these buttons is a dropdown menu set to 'COM9' and a small green square icon.



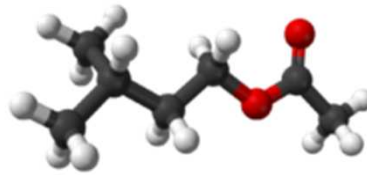


Filter Systems

Tools to verify the filtersystem



Vaneometer



Banana oil



PID meter



Smoke pen



Particle counter



Air flow/speed
measuring device



Vacuum meter



Filter Systems

